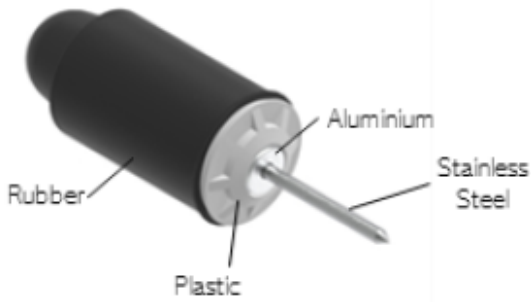




# RiveStop

Watertight sealing system for formwork voids

RIVESTOP STANDARD RANGE > 5 BAR PRESSURE

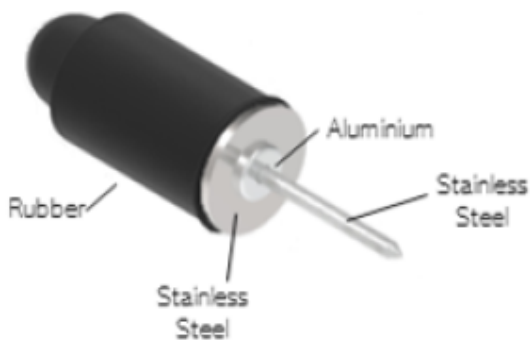


Article Code	Description	Diameter Hole (mm)	Indoor / Outdoor version
RS21033PS24	D21X33	22	Outdoor only
RS17048PS17	D17X48	18-21	Indoor Only
RS21048PS24	D21X48	22-24	Outdoor only
RS24050PS24 / 30	D24X50	25-28	Indoor and outdoor
RS27050PS30	D27X50	28-30	Outdoor only

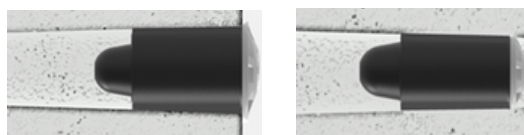
(2) Stainless steel washers allow versatility for indoor and outdoor applications.

## RIVESTOP PREMIUM RANGE > 8 BAR PRESSURE

The piece complies with the water penetration depth under pressure according to DIN-EN 12390-8:2019-Part 10.



FINISHED IN EXTERIOR WALL INSTALLATION OR INSERTED IN THE WALL



### CERTIFICATES



Watertight under pressure



Durability



Aging test



Hermetic against radon gas



Acoustic resistance



Fire resistance



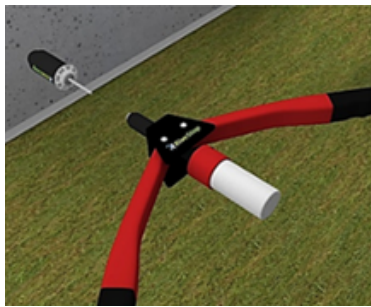
## INSTALLATION PROCESS

Rivestop is distributed ready for installation in a very simple way

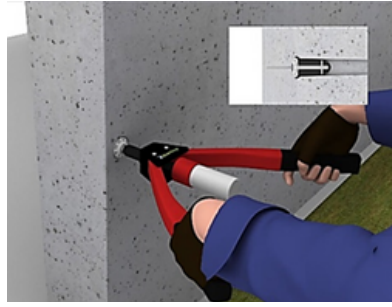


**ELECTRIC RIVETING MACHINE \***

Approximately  
**420 holes / 1h**



1. Insert Rivestop into riveting machine



2. Insert into the hole to be sealed



3. Rivet up to the rivet shank cutout.

**MANUAL RIVETING MACHINE**

Approximately  
**120 holes / 1h**

## INSTALLATION TOOLS

**Description:**

MANUAL RIVETING MACHINE



**Article Code:**

RMM001

LONG NOSE RIVETING MACHINE



RMMX001

ELECTRIC RIVETING MACHINE



RME001

\*Consult with the Rivestop System, S.L. sales team for the correct reference to use in case of presence of chemical agents.

\*The riveting tests have been carried out with a riveting machine with a torque of 13kN and a stroke length of 25 mm.



[www.rivestop.com](http://www.rivestop.com) [rivestop@rivestop.com](mailto:rivestop@rivestop.com)

