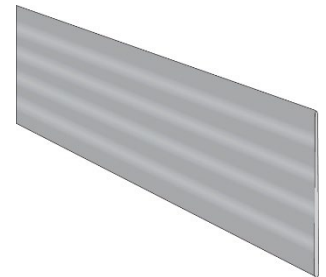


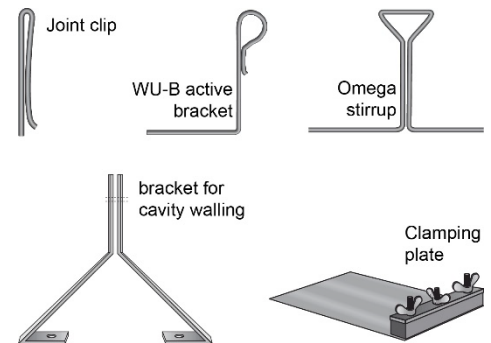
WU-B active Joint sheet

Item No.	Type	dimension	m
		mm	PU
15660	Joint sheet „WU-B-active“	2000 x 150 x 1,25	100



WU-B active accessories

Item No.	Type	Requirement	m
			PU
15664	Joint clip	1 item/sheet	100
15663	Omega stirrup	2 item/sheet	100
15661	WU-B active bracket	2 item/sheet	100
15665	bracket for cavity walling	2 item/sheet	100
15666	Clamping plate	1 item per joint	1



➔ -ETA-18/0828

➔ -HY Drinking water approval

- ETA approval by DIBT and drinking-water tested by the Hygiene Institute
- Active sealing (Crystallization, Active mineralization, Chemical bond)
- No risk of premature destructive activation (by rain) - Crystallization starts with moisture - no damage occurs
- UV resistant
- Independent of temperature and weather
- No joint bonding required (The joint seals actively through crystallization and sintering)
- No protective film required (Concrete splashes are actively crystallized/mineralized and are therefore not weak points)
- Tested tight up to 8 bar
- Approval of drinking water
- Slurry-resistant
- Minimum concrete insertion depth ≥ 3 cm
- Joint overlap ≥ 5 cm
- Joint connection either with the omega bracket or the joint clamp

Material-characteristics:

Galvanized sheet with special mineral coating on both sides

Building material class: A1

Technische Änderungen vorbehalten